

Basic features

Application	Ethernet, CAT 5
Approval/Conformity	CE cULus WEEE UKCA

Electrical connection

Bending radius min., flexible cable	10 x D
Cable	TPE Shielded teal, 2 m, drag chain compatible
Cable diameter D	6.10 mm ±0.25 mm
Cable, bending cycles min.	1 mil.
Cable, note	Ethernet, CAT 5E
Conductor cross-section	24 AWG
Connection 1	M12x1-Male, straight, 4-pin, D-coded
Connection 2	RJ45-Male, straight, 4-pin
Number of conductors	4
System	Molded/assembled

Electrical data

Cable rated voltage AC max.	600 V
Cable rated voltage DC max.	600 V
Conductor construction	2x2 twisted-pair
Conductor resistance	≤ 26.5 Ohm/1000 ft
Operating capacitance	13.5 pF/ft
Operating voltage Ub	60 VDC
Operating voltage max. DC (UL)	42 V
Rated current (40 °C)	1.5 A
Surge impedance	100 Ohm ±15 Ohm
Transfer rate	10/100 Mbit/s

Environmental conditions

Cable temperature, fixed routing	-40...80 °C
Cable temperature, flexible routing	-20...60 °C
IP rating	IP67/IP20

Material

Cable jacket material, note	Shielded
Cable jacket, material	TPE
Cable shield	Aluminum foil and copper braid
Material contact carrier	PUR/PC
Material contacts	Gold plated/Gold plated
Material cover nut	Die-cast zinc nickel-plated
Material grip	PUR/PUR

Mechanical data

Cable jacket, color	teal
Cable length L	2.00 m
Tightening torque pigtail	0.6 Nm/-

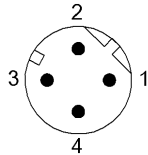
Remarks

Cable construction acc. to UL CMX Outdoor or AWM Style 2463
 Enclosure rating per IEC 60529 or ISO 20653, only in screwed state with the associated mating piece.

Connector Drawings

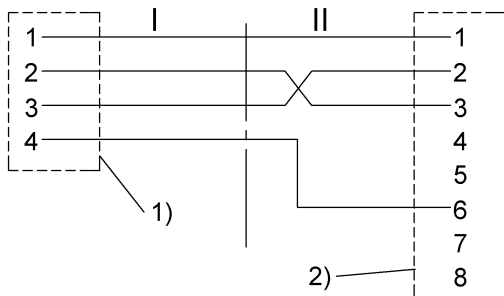


II
 PIN 1: white/orange
 PIN 2: orange
 PIN 3: white/green
 PIN 4: not used
 PIN 5: not used
 PIN 6: green
 PIN 7: not used
 PIN 8: not used



I
 PIN 1: white/orange
 PIN 2: white/green
 PIN 3: orange
 PIN 4: green

Wiring Diagrams (Schematic)



1) Shield on cover nut
 2) Shield on housing