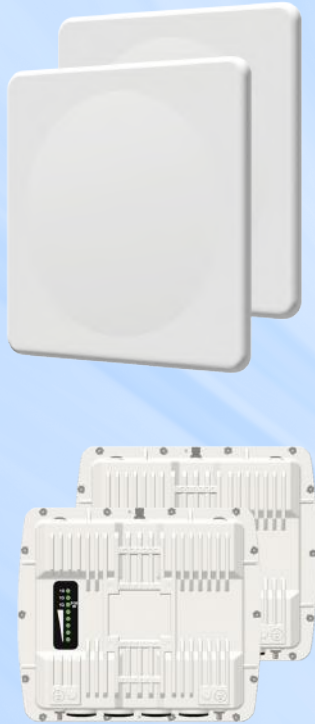


Stratum™ X3 Quickbridge - 6GHz



Product Snapshot

The Stratum X3 Quickbridge - 6GHz is a high performance MIMO 2x2 point-to-point solution capable of throughput up to 1Gbps.

The Stratum X3 Quickbridge is an excellent long-range backhaul solution.

Both integrated and external antenna options are available and enable long-range high-capacity secure over the air Ethernet transmission.

- Throughput up to 1Gbps
- Wide Band Radio - 5.925 – 7.125 GHz
- Triple 1Gbps Ethernet with POE in and out
- AES 128-bit encryption is upgradeable to 256-bit
- 20, 40 and 80 MHz channels.
- Full tilt and swivel mounting kit included.

Flexible Antenna Options

The SX3-2021A is a flexible variant that includes an integrated dual polarity panel antenna, plus software selectable connectors for external antennas.

Model SX3-2020A is a connectorized unit purpose build for external dual polarity antennas where specific antenna patterns or gain adjustments are needed.

Advanced Interference Management

Proxim ClearConnect™ combines multiple dynamic technologies and delivers the best interference management solution.

Bridge in a Box

Ship as a preconfigured Quickbridge bundle: two units paired into a point to point link in a single carton.

Flexible and Secure Management Options

Management options include Proxim BlueConnect™; our Bluetooth-enabled mobile management application; TLS 1.3 web GUI, SSH 2.0 CLI, and SNMP v3 for ProximVision Advanced or other network management solutions.

Rugged Reliability

Stratum X3 uses an IP67-rated metal enclosure to ensure years of reliable service in harsh environments, including high winds, high salt, and temperature extremes.

Specifications

PRODUCT MODELS

SX3-2021A-WD Quickbridge	Stratum X3 Quickbridge, 6 GHz All-purpose unit (BSU single or SU), 1 Gbps, 9° dual pol antenna or RP-SMA - WD PoE	PN: 907-00017
SX3-2020A-WD Quickbridge	Stratum X3 Quickbridge, 6 GHz All-purpose unit (BSU single or SU), 1 Gbps, RP-SMA - WD PoE	PN: 907-00023

LICENSES

SX3-202xA-QB-AES256-UPG	Stratum X3 Quickbridge, 6 GHz link AES 256 license upgrade	PN: 997-00070
-------------------------	--	---------------

INTERFACES

WIRED ETHERNET	One auto MDI-X RJ45 1 Gbps Ethernet with PoE in One auto MDI-X RJ45 1 Gbps Ethernet with PoE out One auto MDI-X RJ45 1 Gbps Ethernet
WIRELESS PROTOCOL	WORP® (Wireless Outdoor Router Protocol)

RADIO & TX SPECS

MIMO	2x2:2
MODULATION	OFDM BPSK-QAM1024
FREQUENCY	5.925 - 7.125 GHz (Subject to Country Regulations)
CHANNEL SIZE	20, 40 and 80 MHz (160 MHz via future upgrade)
TX POWER	Up to 27 dBm (dual chain)
TX POWER CONTROL	0 - 24 dB, in 1 dB steps. Automatic TPC with configurable EIRP limit

	20 MHz	40 MHz	80 MHz
TX POWER	MCS0:	MCS0:	MCS0:
2 RF	27	27	27
	MCS11:	MCS11:	MCS11:
2 RF	18	18	18
RX SENSITIVITY (Per=10 ⁻⁶)	MCS0:	MCS0:	MCS0:
	-89	-87	-83
	MCS11:	MCS11:	MCS11:
	-59	-56	-52
Throughput - Dual Stream	223 Mbps	435 Mbps	755 Mbps
OTHER	Dynamic Channel Selection (DCS) based on interference detection, Automatic Transmit Power Control (ATPC) with EIRP limit support		

ANTENNA

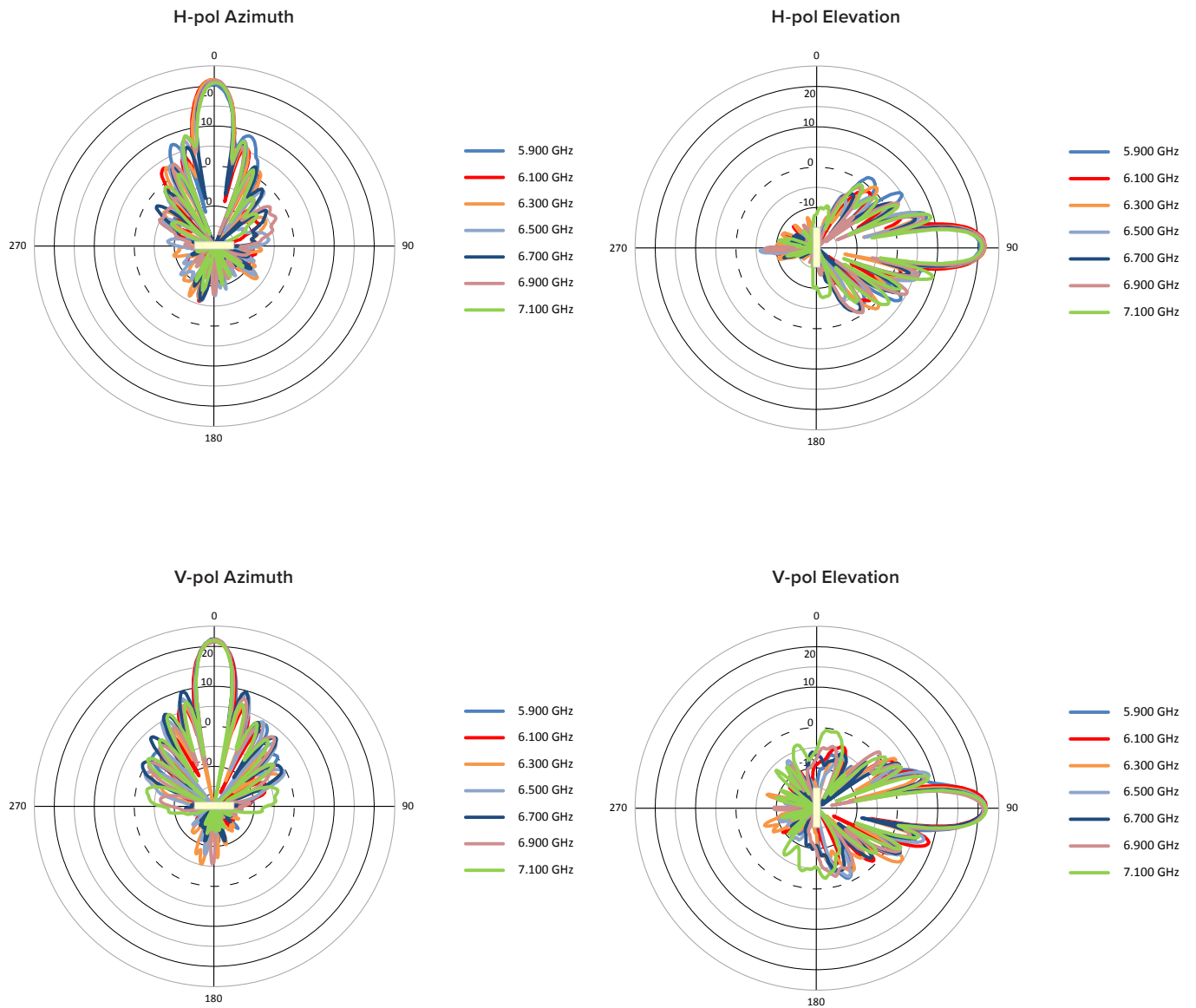
SX3-2020A

Two RP-SMA Connectors

SX3-2021A

Integrated 2x2 MIMO 23 dBi dual Polarized 8.5 degree Panel Antenna plus two RP-SMA Connectors
(Software switch between integrated antenna and connectors)

ANTENNA PATTERNS



MANAGEMENT

BLUETOOTH LOW ENERGY	Proxim BlueConnect™
REMOTE	Telnet and SSH 2.0, Web GUI and TLS 1.3, TFTP, SNMP v1/v2c/v3
OTHER	Syslog, SNTP and local time, Spectrum analyzer
MULTI-LANGUAGE SUPPORT	Web Interface available in English, French, Spanish and Chinese

SECURITY

ENCRYPTION	AES 128 (AES 256 via license upgrade)
AUTHENTICATION	Internal MAC Address Control List, Radius based Authentication (with VLAN and QoS provisioning)

NETWORK

MODES	Bridging, (Routing to be added by future firmware update)
IP STACK	IPv4 and IPv6 simultaneously
VLAN	802.1Q: Management VLAN. Transparent, Access, Trunk and Mixed mode. QinQ double tagging

POWER

802.3at compliant

POWER CONSUMPTION

14 to 17 W max in MIMO 2x2 mode

ENVIRONMENTAL SPECS	OPERATING TEMPERATURE	STORAGE TEMPERATURE	HUMIDITY - IP RATING	WIND LOADING
	-40° to 60°C	-50° to 70°C	100% relative humidity	180 km/h (112.5 mph)
	-40° to 140° Fahrenheit	-58° to 158° Fahrenheit	IP67	
PHYSICAL SPECS	DIMENSIONS (Shipping Carton - 2 Units or 1 QB link)	DIMENSIONS UNPACKAGED	WEIGHT (Shipping Carton - 2 Units or 1 QB link)	WEIGHT (UNPACKAGED)
SX3-2020A	388 x 346 x 428 mm 15.27 x 13.62 x 16.85 in	250 x 220 x 62 mm 9.84 x 8.66 x 2.44 in	10.0 Kg 22.04 lbs	1.6 Kg 3.53 lbs
SX3-2021A	388 x 346 x 428 mm 15.27 x 13.62 x 16.85 in	305 x 305 x 90 mm 12 x 12 x 3.54 in.	12.6 Kg 27.78 lbs	2.4 kg 5.30 lbs

SAFETY STANDARDS (Pending)

IEC 62368-1:2018
EN IEC 62368-1:2020+A11:2020
BS EN IEC 62368-1:2020+A11:2020
UL 62368-1:2019, CSA C22.2 No. 62368-1:19

CERTIFICATIONS (Pending)

USA	EMC/EMI: CFR47, FCC part 15, Subpart B (class A) Bluetooth: FCC Part 15 Subpart C 15.247,15.205, 15.207 & 15.209
CANADA	EMC/EMI: ICES-003 issue 7:2020 (class A) Bluetooth: RSS-247 issue 3 & RSS Gen Issue 5
EUROPE	EMC/EMI: EN 55032:2015+A1:2020, EN 55035:2017+A11:2020
UK	EMC/EMI: BS EN 55032:2015+A1:2020, BS EN 55035:2017+A11:2020

PACKAGE CONTENTS

- One Stratum SX3-2020A unit with two RP-SMA connectors
or One Stratum SX3-2021A with integrated antenna plus two RP-SMA connectors
- One (SX3-2020A) or Three (SX3-2021A) RP-SMA weather proofing caps
- Two M25 weather proofing cable glands
- One power injectors and country specific power cords
- One full axis mounting kits
- One Grounding kits
- One Quick Installation Guides

One Stratum X3 Quickbridge package includes twice the above content. The two units are paired together into a Point to Point link.

MTBF & WARRANTY

>450 000 hours, 2-year warranty, ServPak Extended Support available.

ABOUT PROXIM WIRELESS :

Proxim Wireless is a global leader in advanced wireless broadband and WiFi solutions that deliver high performance and high availability communications.

Celebrating 40 years of pioneering wireless solutions, Proxim is recognized for unparalleled reliability, superior performance, and drive for innovation.

© 2025 Proxim Wireless Corporation. All rights reserved. Proxim is a registered trademark and the Proxim logo is a trademark of Proxim Wireless Corporation. All other trademarks mentioned herein are property of their respective owners. Specifications are subject to change without notice.